

# **ONE-PIECE SWIMSUIT PATTERN** for Pullip Dolls



[www.vrooshka.com](http://www.vrooshka.com)

## ONE-PIECE SWIMSUIT

### Materials:

printer, paper, elastic fabric suitable for a swimsuit, a tailor's chalk or a fabric pencil, threads and a needle or a sewing machine



## One-Piece Swimsuit – a Pattern for Pullip-Type Dolls

### How to make the swimsuit:

#### A. Pattern preparation

1. Make sure that the "Actual size" option is selected in the printer settings.
2. Print the swimsuit pattern pieces.
3. Measure if the scale at the bottom is 1 cm long (if not, adjust the printer settings and print once again).
4. Cut out the pattern pieces (note: the pieces in the drawing do NOT have allowance – 0.5 cm should be added on the fabric for the seams).

#### B. Transferring the pattern pieces to the fabric

**Note:** the arrows on the pattern pieces show the direction of the warp in the material (the warp thread is parallel to the selvage).

1. Iron the selected fabric (if it can be ironed).
2. Put the pattern pieces of the front and the back of the swimsuit onto the fabric, with the direction of the arrow the same as the direction of the warp thread in the material (if you have a long piece of the fabric, you can join the pattern pieces of the front and the back at the crotch – in this way, you will obtain one element for the whole fabric, and you will not have to make the crotch seam).
3. Transfer the pattern pieces on the fabric with the chalk or pencil.

#### C. Cutting the elements out from the fabric

1. Cut out the elements from the fabric, separately or joined at the crotch (images 1 and 2).

After having cut out the elements from the fabric, you should have (images 1 and 2):

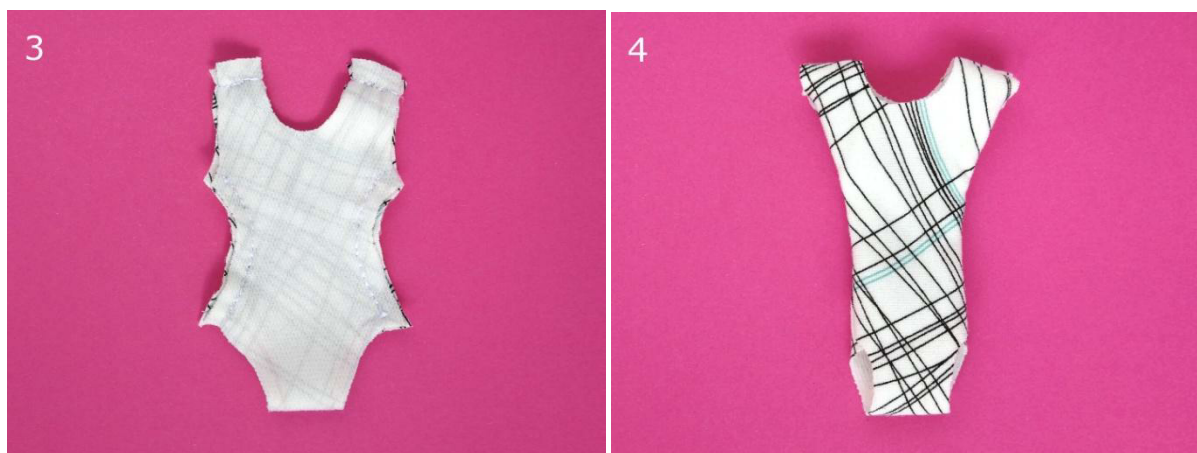
1 x front, 1 x back (or 1 x the front and the back together).



## One-Piece Swimsuit – a Pattern for Pullip-Type Dolls

### D. Sewing

1. Optionally, if your chosen fabric unravels at the edges or if you wish to have a more finished visual effect, overcast all edges of the swimsuit (many types of elastic and knitted fabrics do not require edge overcasting).
2. Sew the side edges of the swimsuit together on the wrong side (image 3).
3. Sew the shoulder straps of the swimsuit together on the wrong side (image 3).



4. Make the crotch seam on the wrong side (omit this point if you have cut out the front and back elements together, joined at the crotch).
5. Turn the swimsuit to the right side (image 4).



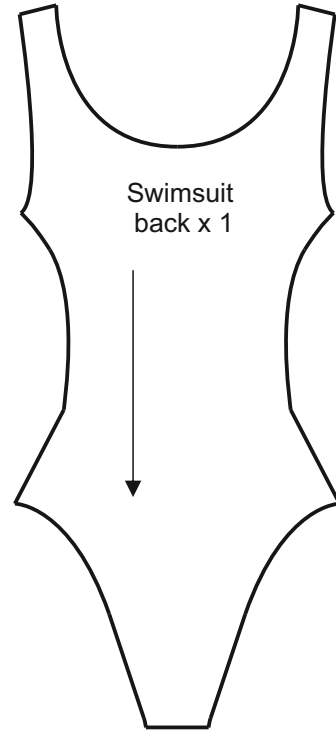
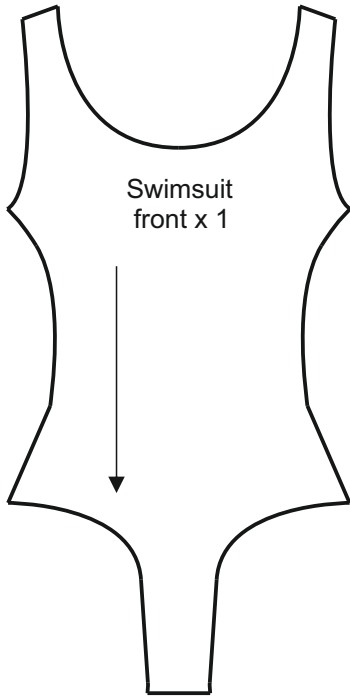
6. Dress a doll and check if the swimsuit fits; if it is too loose, you can sew the side seams tighter together (image 5).
7. Fold in 0.5 cm of the upper edge of the swimsuit and topstitch it (images 6 and 7).

## One-Piece Swimsuit – a Pattern for Pullip-Type Dolls



8. Fold in 0.5 cm of the leg openings and topstitch them (images 6 and 8).
9. Fold in 0.5 cm of the armscye lines and topstitch (images 6 and 7).

The one-piece swimsuit is ready!



1 cm

1 in